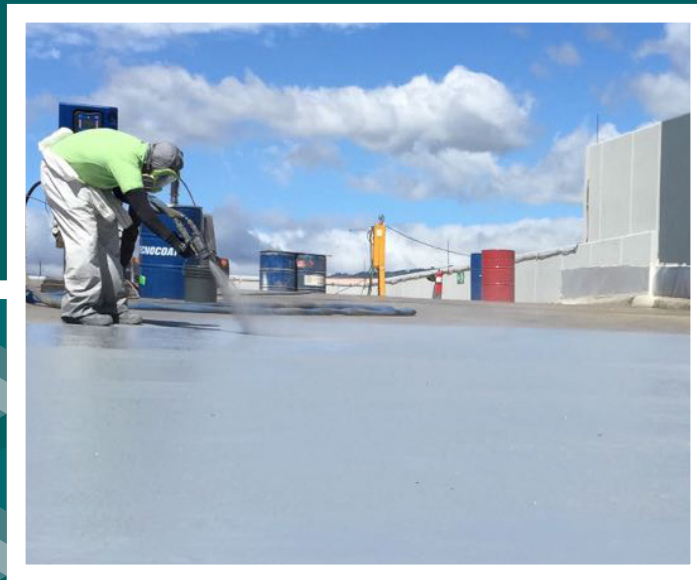


POLYGLASS®



TECNOCOAT

POLYUREA
WATERPROOFING SYSTEMS



POLYGLASS TECNOCOAT

Liquid-Applied Waterproofing and Traffic Coatings

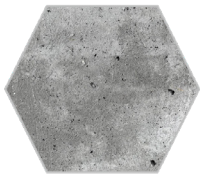
Comprehensive portfolio of hand-applied and spray-applied waterproofing and traffic coatings systems. The Tecnocoat line of products has a solution for waterproofing new construction and restoration projects.

Developed and tested to withstand the most challenging environments we have the most versatile liquid applied system on the market today.

- Fast drying = Fast return to service
- Tough enough to withstand trade traffic
- UV exposure
- Wide application conditions and temperature range
- Variety of substrates
- Wear resistance
- Waterproof
- Seal the Envelope™ Warranty



TYPICAL SUBSTRATES



CONCRETE

Widely used for waterproofing roofs, covers, basements, foundations, tunnels, and civil works structures.



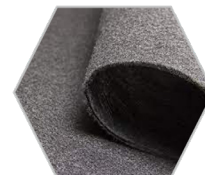
METAL

Applied on steel surfaces for corrosion protection, including pipelines, gutters, tanks, and metal roofs.



WOOD

Used to waterproof wooden structures such as decks, roofs, and flooring.



GEOTEXTILE

To create containment barriers or secondary containment for chemicals, or in poor substrates.



EPS

Often coated for protection in insulation applications or in decorative uses.



PLASTICS

Suitable for various plastic materials to enhance strength and water or chemical resistance.



RUBBER

Coating rubber surfaces for added durability and chemical resistance.



CERAMIC TILES

For waterproofing in wet areas such as bathrooms and kitchens or balconies and terraces.

Polyglass TECNOCOAT P-2049

Two-component, fast-setting, spray-applied pure polyurea membrane designed for superior waterproofing and traffic coating applications.

Engineered for durability and integrity under mechanical stress, it offers exceptional chemical resistance and elasticity, even in extreme conditions. Its seamless and fully bonded, spray-on application ensures rapid curing, creating a monolithic membrane ideal for a variety of surfaces and applications.

Product Features:

- 80 mils
- Tack free time 5 seconds
- Foot trafficable in minutes
- Easy to repair
- Low VOCs
- System application 40°F and rising
- Coverage at 80mils WFT 20sqft/gallon
- Adheres to a wide variety of substrates
- Can be used in exposed applications with approved Tecnocoat Topcoat
- Spray applied

System Components

- **2 Component Primers:** Primer EP-1010, Primer EP-1020, PU-1050
- **Top Coats:** Tecnotop 1C, Tecnotop 2C, Tecnotop S-3000

Polyglass TECNOCOAT H-2049

Two-component, fast-setting, spray-applied polyurea membrane designed for superior waterproofing and traffic coating applications.

Engineered for durability and integrity, even in extreme conditions, its seamless and fully bonded, spray-on application ensures rapid curing, creating a monolithic membrane ideal for a variety of surfaces and applications.

Product Features:

- 80 mils
- Tack free time 5 seconds
- Foot trafficable in minutes
- Easy to repair
- Low VOCs
- System application 40°F and rising
- Coverage at 80mils WFT 20sqft/gallon
- Adheres to a wide variety of substrates
- Can be used in exposed applications with approved Tecnocoat Topcoat
- Spray applied

System Components

- **2 Component Primers:** Primer EP-1010, Primer EP-1020, PU-1050
- **Top Coats:** Tecnotop 1C, Tecnotop 2C, Tecnotop S-3000

Applications:

- Sloped/Flat Roofs
- IRMA
- Concrete Decks
- Balconies
- Water Containment
- Parking Garages
- Foundations

Applications:

- Sloped/Flat Walkable Roofs
 - IRMA
 - Concrete Decks
 - Balconies
 - Parking Garages
 - Foundations
- * Additional considerations for:
high chemical resistance or
constant water immersion
(Call Technical)*





Polyglass TECNOCOAT P-2049 EL

Two-component, fast-setting spray applied polyurea waterproofing membrane designed for use with metal substrates

Engineered for durability and integrity under mechanical stress, it offers exceptional chemical resistance and elasticity, even in extreme conditions. Its seamless and fully bonded, spray-on application ensures rapid curing, creating a monolithic membrane ideal for metal surfaces.

The elongation properties of Tecnocoat P-2049 EL, make it ideal for applications where high movements require a stretchable product.

Product Features:

- 80 mils
- Tack free time 15 seconds
- Foot trafficable in minutes
- Easy to repair
- Highest elongation for use in metal applications
- Low VOCs
- System application 40°F and rising
- Coverage at 80mils 20sqft/gallon
- Adheres to metal
- Spray applied

Applications:

- Sloped/Flat Walkable Roofs
 - IRMA
 - Concrete Decks
 - Balconies
 - Parking Garages
 - Foundations
- * Additional considerations for: high chemical resistance or constant water immersion (Call Technical)*

System Components

- **2 Component Primers:** Primer EP-1010, Primer EP-1020, PU-1050
- **Top Coats:** Tecnotop 1C, Tecnotop 2C, Tecnotop S-3000

Polyglass TECNOCOAT P-2049 AL

Two-component, fast setting, spray-applied polyurea waterproofing membrane for permanently exposed applications

Engineered for durability and integrity under mechanical stress, it offers exceptional chemical resistance and elasticity, even in extreme conditions. Its seamless and fully bonded, spray-on application ensures rapid curing, creating a monolithic membrane ideal for a variety of surfaces and applications.

The aliphatic properties of Tecnocoat P-2049 AL, make it ideal for permanently exposed applications where resistance to UV is needed.

Product Features:

- 80 mils
- Tack free time 5 seconds
- Foot trafficable in minutes
- Easy to repair
- Low VOCs
- System application 40°F and rising
- Coverage at 80mils WFT 20sqft/gallon
- Adheres to a wide variety of substrates
- Spray applied

Applications:

- Sloped/Flat Walkable Roofs
- Concrete Decks
- Balconies
- Parking Garages
- Pools/Water Features
- Vehicular Traffic Coatings

System Components

- **2 Component Primers:** Primer EP-1010, Primer EP-1020, PU-1050
- **Top Coats:** Tecnotop 1C, Tecnotop 2C, Tecnotop S-3000

Polyglass TECNOCOAT CP-2049

Two-component, fast-setting, hand-applied polyurea membrane designed for superior waterproofing and traffic coating applications.

Engineered for durability and integrity under mechanical stress, it offers exceptional chemical resistance and elasticity, even in extreme conditions. Its seamless and fully bonded application ensures rapid curing, creating a monolithic membrane ideal for a variety of surfaces and applications.

Product Features:

- 80 mils
- Dry time 3 hours
- Foot trafficable in minutes
- Easy to repair
- Low VOCs
- System application 40°F and rising
- Pot life 20-25 minutes
- Coverage at 80mils WFT 20sqft/gallon
- Adheres to a wide variety of substrates
- Can be used in exposed applications with Topcoat
- Roller or Squeegee applied

Applications:

- IRMA
- Balcony Decks
- Concrete Decks
- Pedestrian Systems
- Vehicular Systems
- Commercial Pools and Water Features

System Components

- **2 Component Primers:** Primer EP-1010, Primer EP-1020, PU-1050
- **Top Coats:** Tecnotop 1C, Tecnotop 2C, Tecnotop S-3000





Primers

Polyglass Primer EP-1010

Two component epoxy primer designed to enhance adhesion between substrate and Tecnocoat membrane systems

- 100% Epoxy Primer
- 20kg, 4:1 kit
- 30 min pot life; Dry time 4 hours
- Roller or squeegee applied
- Above 40°F on concrete

Polyglass Primer EP-1020

Two component epoxy primer designed for use on metal substrates

- 100% Epoxy Primer
- 15kg; 2:1
- 30 min pot life; Dry time 2 hours
- Can be used on metal
- Roller or squeegee applied
- Above 40°F on concrete

Polyglass Primer PU-1050

Two component Polyurethane primer designed for use with the Tecnocoat membrane systems

- 100% Polyurethane Primer
- 10kg, 1:1 kit
- 35-50 minutes pot life; Dry time 2 hours
- Roller or squeegee applied
- Above 40°F on concrete

System Accessories

Mapeproof™ Liquid Membrane Tecnocoat Mastic Joint Filler

Top Coats

Our line of topcoats can be used in permanently exposed applications

Polyglass Tecnotop 1C

Single component aliphatic Polyurethane top coat designed for use on vertical upturns

- 20kg Gray
- Ideal for vertical upturns; maintenance only traffic
- Initial dry time 8 minutes
- Recoat time 8 minutes-48 hours
- Roller or squeegee applied

Polyglass Tecnotop 2C

Two component polyurethane chemical resistant top coat designed with UV resistance capabilities ideal for vehicular and pedestrian traffic. Used as a protective layer for Tecnocoat systems, it is designed for permanently exposed applications ensuring weather ability performances.

- 20kg White and Gray
- Ideal for vehicular/pedestrian traffic as well as chemical resistant applications
- Pot life 60 minutes
- Dry time 2 hours
- Roller or squeegee applied

Polyglass Tecnotop S3000

Two component polyaspartic top coat designed with mechanical resistance capabilities for heavy traffic applications

- 5kg in neutral
- Generally a more durable topcoat
- Pot life 30 minutes
- Dry time 90 minutes
- Ideal for heavy traffic applications
- Roller or squeegee applied



POLYGLASS®



POLYGLASS U.S.A., Inc.

1111 West Newport Center Drive

Deerfield Beach, FL 33442

pgmarketing@polyglass.com

Customer Service: (800) 222-9782

polyglass.us

© 2025 Polyglass U.S.A., Inc. All rights reserved.

All information printed is accurate at the time of publication and may change at any time with or without notice.
For the most up to date information and data, visit our website at polyglass.us.