

POLYGLASS[®]



POLYANCHOR[®] XFR

EMBER RESISTANT FIRE RATED UNDERLAYMENT



Polyanchor[®] XFR – Ember Resistant Fire Rated Underlayment

Polyanchor XFR is a fire-rated dual purpose ember and water resistant underlayment. Polyanchor XFR features a plastomeric modified bitumen upper compound and a self-sealing SBS modified compound on the bottom. Polyglass' patent-pending Burn-Shield Technology[®] provides superior ember resistance. Polyanchor XFR features a slip-resistant embedded mineral aggregate walking surface which contributes to the overall ember resistance of the membrane. The bottom surface is sanded to protect the self-sealing compound. Polyanchor XFR is ideally suited for mechanically attaching under clay/concrete tile roof covering systems where ember resistance is required or desired.

The result is a product which provides water resistance and Class A fire protection in a single layer, instead of the typical solution requiring multiple layers to achieve the same result. This translates to labor and material cost savings which ultimately benefits the building owner and contractor. The building occupants can enjoy peace of mind knowing that Polyanchor XFR is providing safety and protection of their possessions.

Features & Benefits

- Patent-pending Burn-Shield Technology[®] provides superior ember resistance
- Meets CA code requirements - Class A Fire Rated ember resistant underlayment for WUI (Wildland Urban Interface)
- Fiberglass mat provides increased strength and fire resistance
- Mineral aggregate surface engineered for superior slip resistance
- Self-sealing plastomeric modified asphalt bottom compound
- Up to 180 day exposure

Applicable Standards

- Listed by California State Fire Marshal
- UL Classified
- ASTM E108/UL790, Class A Fire Resistance
- ASTM D4601 Type II
- ASTM D6757
- Meets the physical requirements of ASTM D226 Type I & II

THE BURNING TRUTH



More than 60,000 communities in the United States are at risk for WUI fires.



Between 2002 and 2016, an average of over 3,000 structures per year were lost to WUI fires in the United States.



The WUI area continues to grow by approximately 2 million acres per year.

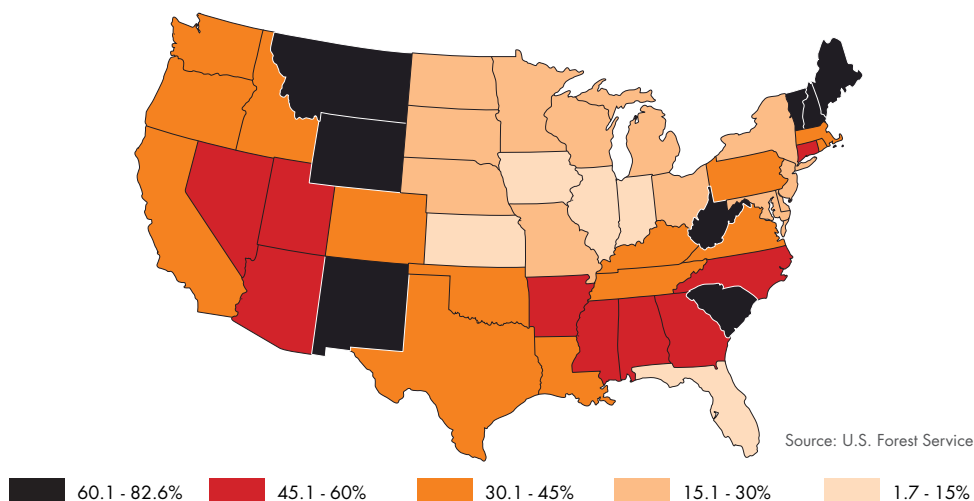


States with the greatest number of houses in the WUI:

1. California 2. Texas 3. Florida
4. North Carolina 5. Pennsylvania

National Association of State Foresters PDF, U.S. Department of Homeland Security and National Institute of Standards and Technology

NUMBER OF HOUSES IN THE WUI RELATIVE TO THE TOTAL HOUSES IN THE STATE (%)



UL Class A*

Polyanchor® XFR underlayment provides added fire protection to a building when installed under clay/concrete tiles or asphalt shingles. Extensive and unique testing has been completed with Polyanchor XFR for the California State Fire Marshal (CalFire) and Underwriters Laboratories (UL) for a Class A fire designation. This means Polyanchor XFR as part of a roofing assembly has passed spread of flame, intermittent flame and burning brand tests. In addition to those tests, Polyanchor XFR underwent burning ember testing where embers and 1200°F heat were blown directly onto the surface of Polyanchor XFR.

California requires a Class A fire rating for the roof assembly in the Wildland Urban Interfaces (WUI), but this is not the only state with WUI. There are many municipalities across the country that have codified a Class A fire rating. Even if the code authorities do not require Class A, specifiers and building owners may want a Class A roof system for their building to provide safety and protect their possessions.

A clay or concrete tile is a Class A roof covering by itself but Polyanchor XFR is still desirable to increase ember resistance as a component of a Class A system under the ASTM E108 test method.



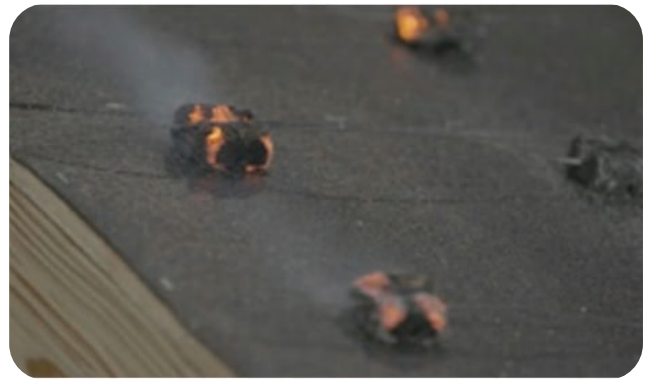
PRODUCT DATA***

- Net Coverage (Approx) 200 ft² (18.5 m²)
- Gross Coverage (Approx)..... 215 ft² (20 m²)
- Weight (Approx) 87 lbs (39.5 kg)
- Thickness (Nominal) 70 mils (1.8 mm)
- Roll Size 65'8" × 39 3/8" (20 m × 1 m)
- Rolls/Pallet..... 25

***All values are nominal at time of manufacturing



Polyanchor® XFR passed ASTM E108 Class A burning brand test under tile.



Polyanchor® XFR passed Class C burning test under ASTM E108, with no covering.



Polyanchor® XFR was exposed to burning embers and 1200°F blowing heat without igniting the wood roof decking.

POLYANCHOR XFR FIRE-RATED EMBER RESISTANT UNDERLAYMENT CLASS A RATING LAYER REQUIREMENTS

Deck	Underlayment	Roof Covering	Slope
Plywood (15/32"), spaced sheathing	Polyanchor XFR, mechanically fastened	Approved clay/concrete tile roof coverings*	Unlimited

*Refer to published Polyglass CalFire BMS listing 8180-2305:0504 for specific fire rated assemblies.

Deck	Underlayment	Roof Covering	Slope
As listed by shingle manufacturer	Polyanchor XFR, mechanically fastened	Any UL Listed Class A asphalt glass fiber mat shingles**	As listed by shingle manufacturer

**Refer to published Polyglass UL listing TGDY.R25992 for specific fire rated assemblies.

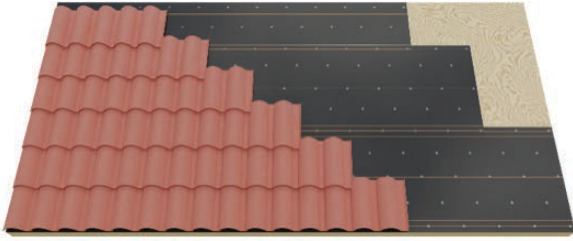


Material and Labor Cost Savings

Polyanchor XFR delivers top tier ember and fire protection in a single layer, while providing a water resistant sheet, unlike the typical multiple-layer methods. This efficiency reduces labor and material costs, providing significant savings to building owners and contractors.

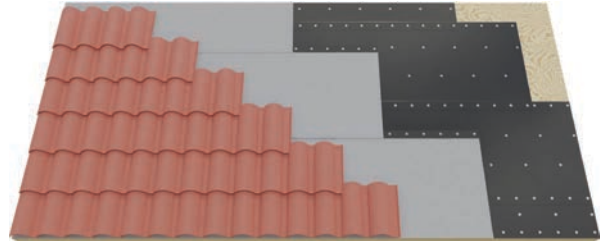
Below is an example of how Polyanchor XFR stacks up against a competitor's solution to achieve a Class A ember resistant assembly under clay/concrete tile roofing:

Polyanchor XFR Typical 1-ply Solution



One fastened layer of Polyanchor XFR

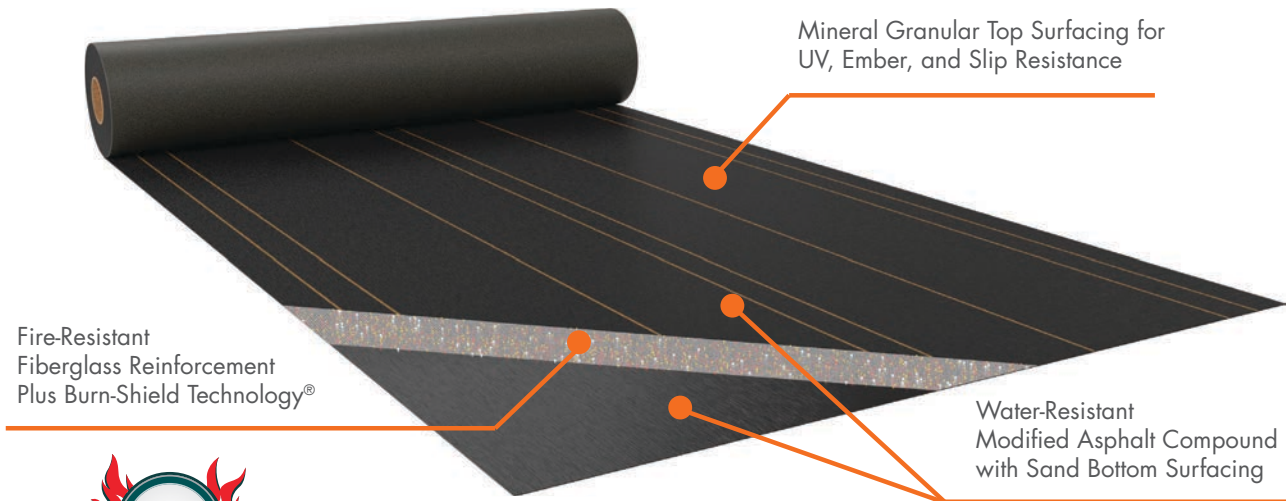
Competitors Traditional 2-Ply System



Fastened 30# Felt with a 72# Cap

Warranty

Polyanchor XFR comes with a standard 10-Year Limited Material Warranty or a 10-year Polyanchor Labor & Material Warranty, when installed by a Polyglass Registered Contractor.



POLYGLASS®



POLYGLASS U.S.A., Inc.

1111 West Newport Center Drive, Deerfield Beach, FL 33442
pgmarketing@polyglass.com • Customer Service: (800) 222-9782

polyglass.us

© 2024 Polyglass U.S.A., Inc. All rights reserved.

All information printed is accurate at the time of publication and may change at any time with or without notice. For the most up to date information and data, please visit our website at polyglass.us.