

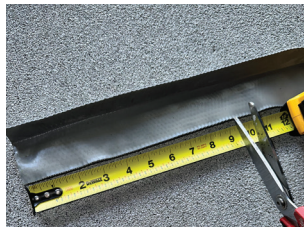
POLYFLASH® FLEXIBLE CURB KIT INSTALLATION INSTRUCTIONS

SURFACE PREPARATION

All surfaces must be structurally sound and free of foreign materials including but not limited to dirt, tar, oil, grease, loose paint, wax and other contamination from adjacent working surfaces.

INSTALLATION INSTRUCTIONS

1. Take the Flexible Curb Component (FCC) out and cut to desired size. Consult the Cut Chart for length required based on size desired.



Step 1

2. Place the FCC around the penetration, make sure you have a minimum of 1" clearance from the curb to the penetration, then mark the exterior perimeter and set aside the FCC.



Step 2

3. Using Polyflash HPS, seal around the base of the penetration and up 2 1/2", then apply a 1/4" bead of sealant on the inside and outside edge of the FCC.



Step 3

4. Set the FCC in place, using the previously marked perimeter, insert the metal clip and apply a bead of Polyflash HPS to the interior edges of the clip.



Step 4

5. Pour in Polyflash 1PS to fill the curb to the very top. Tool the sealant around to finish the look.



Step 5

Cut Chart

Curb Size	FCC Length Required	Polyflash 1PS Required	# per Kit
3" Round	9 3/8"	7.83 oz	5
4" Round	12 1/2"	13.93 oz	4
5" Round	15 3/4"	21.76 oz	3
6" Round	18 7/8"	31.33 oz	2
4.5" x 3.5" Rectangle	16"	17.45 oz	3