

# POLYGLASS®



# POLYANCHOR® XFR

## EMBER RESISTANT FIRE RATED UNDERLAYMENT

Polyanchor XFR is a fire-rated dual-purpose ember and water-resistant underlayment featuring a plastomeric modified bitumen upper compound and a self-sealing SBS modified compound on the bottom.

Polyglass' patent pending Burn-Shield Technology™ provides superior ember resistance. Polyanchor XFR features a slip-resistant embedded mineral aggregate walking surface which contributes to the overall ember resistance of the membrane. The bottom surface is sanded to protect the self-sealing compound.

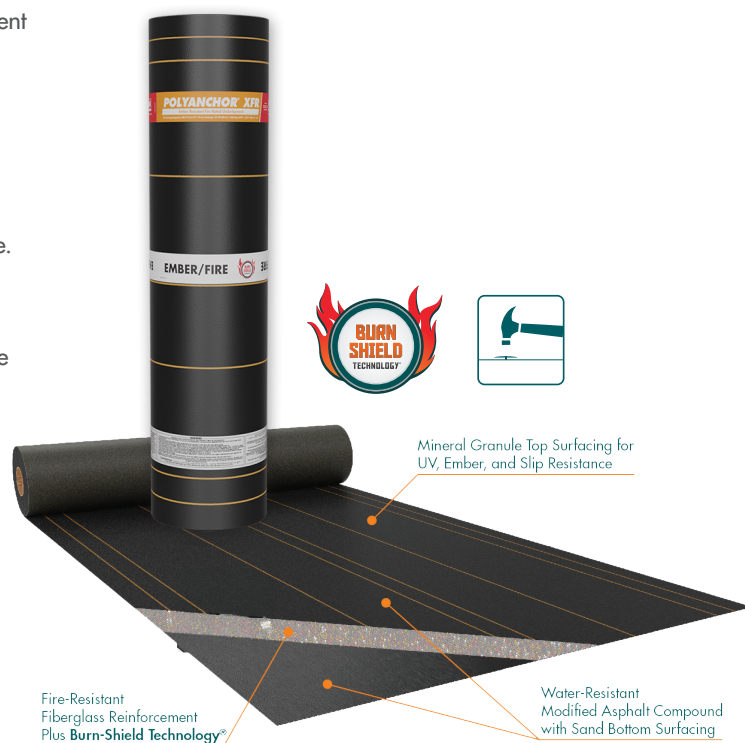
Polyanchor XFR is ideally suited for mechanically attaching under clay/concrete tile roof covering systems where ember resistance is required or desired. Also suitable for use under asphalt shingles.

### Key Features

- Patent pending Burn-Shield Technology™ provides superior ember resistance
- Class A Fire Rated when installed with a Class A Fire-Rated roof covering
- Meets California Building Code requirements - Class A Fire Rated ember resistant underlayment for WUI (Wildland Urban Interface) \*
- Fiberglass mat provides increased strength and fire resistance
- Mineral aggregate surface engineered for superior slip resistance
- Tough plastomeric modified asphalt top compound for tile stacking
- Self-sealing elastomeric modified asphalt bottom compound
- Up to 180 day exposure



*Polyanchor XFR passed ASTM E108 Class A burning brand test under tile.*



### Applicable Standards

- UL Classified
- Listed by California State Fire Marshal
- ASTM E108/UL790, Class A Fire-Resistance\*
- ASTM D4601 (II)
- ASTM D6757
- Meets the physical requirements of ASTM-D226 Type (I) & (II).



# POLYGLASS®



**polyglass.us**  
**(888) 410-1375**

For more information contact your local Polyglass Sales Representative

# POLYGLASS®



# POLYANCHOR® XFR

## EMBER RESISTANT FIRE RATED UNDERLAYMENT

### CLASS A FIRE LISTING BY ROOF COVERING TYPE\*

Polyanchor XFR Fire-Rated Ember Resistant Underlayment - Class A Rating Layer Requirements\*

Deck	Underlayment	Roof Covering	Slope
Plywood (15/32"), spaced sheathing	Polyanchor XFR, mechanically fastened	Approved clay/concrete tile roof coverings	Unlimited

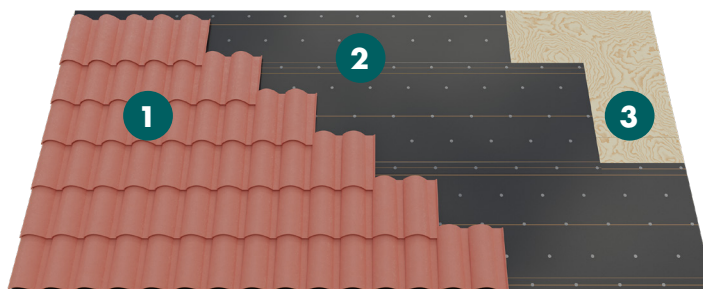
\*Refer to published CalFire BMS listing (8180-2305:0504) for specific fire rated assemblies.

Deck	Underlayment	Roof Covering	Slope
As listed by shingle manufacturer	Polyanchor XFR, mechanically fastened	Any UL Listed Class A asphalt glass fiber mat shingles	As listed by shingle manufacturer

\* Refer to published Polyglass UL listing TGDY.R25992 for specific fire rated assemblies.

### Typical Applications

- Full roof coverage on combustible decks and under Class A roof coverings to protect against burning embers
- As a water-resistant barrier on steep slope roofing under concrete, clay, and slate tiles as well as shingles and shakes
- Areas prone to wildfires as required by building code

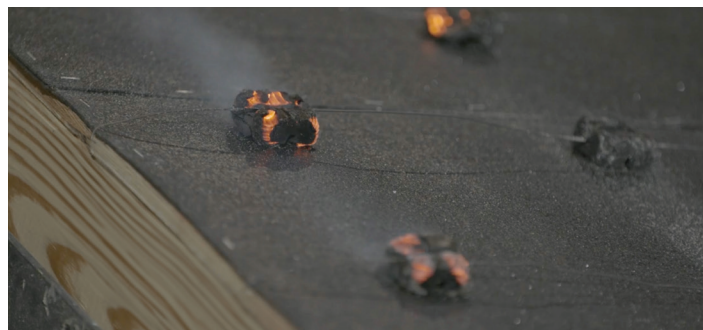


1. Clay/Concrete Tile roof covering
2. Polyanchor XFR (mechanically fastened underlayment)
3. Wood Deck

### Product Data\*\*

- Net Coverage (Approx).....200 ft² (18.5 m²)
- Gross Coverage (Approx).....215 ft² (20 m²)
- Weight (Approx)..... 87 lbs (39 kg)
- Thickness (Nominal)..... 70 mils (1.8 mm)
- Roll Size.....65'8" × 39 3/8" (20 m × 1 m)
- Rolls/Pallet.....25

\*\*All values are nominal at time of manufacturing



Polyanchor XFR passed Class C burning brand under ASTM E108, with no roof covering.

# POLYGLASS®

**polyglass.us**  
**(888) 410-1375**

For more information contact your local Polyglass Sales Representative