

POLYFORZA™ NAILER - METAL RETROFIT

WOOD BLOCKING ALTERNATIVE

PRODUCT DESCRIPTION

PolyForza Nailer - Metal Retrofit eliminates the need for individual wood blocking assemblies required for standing seam flute fill. PolyForza Nailer - Metal Retrofit is fast and easy to install by eliminating wood cutting. Additionally, it ensures a secure, straight, and even edge that will provide lasting performance. PolyForza Nailer - Metal Retrofit is available pitched up to a 4/12 or non-pitched for a variety of metal roof installations.

FEATURES AND BENEFITS

- Provided in 12'-0" lengths with pre-punched holes to install up to 60% faster than wood nailers.
- Slotted fastening holes to allow for proper thermal movement of the materials and ensure correct fastener placement and spacing.
- Available in both pitched and non-pitched versions
- Consistent, lasting perimeter protection: won't crack, warp, split, rot or be susceptible to insects. It is also non-combustible and won't absorb moisture.
- ½" to ¾" cover board can be used on top of the product
- Fasteners will arrive to the job site with the product."

APPLICATION INSTRUCTIONS

See PolyForza Nailer - Metal Retrofit Installation Instructions.

MANUFACTURING FACILITIES

- Fernley, NV
- Hazleton, PA
- Phoenix, AZ
- Waco, TX
- Winter Haven, FL

CORPORATE HEADQUARTERS

Polyglass U.S.A., Inc.

1111 West Newport Center Drive

Deerfield Beach, FL 33442

www.polyglass.us

General Line: (888) 410-1375
(954) 233-1330

Customer Service: (800) 222-9782

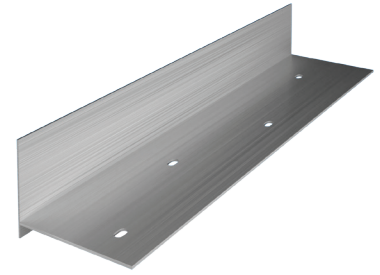
Technical Service: (866) 794-9659

Questions? technical@polyglass.com

Product Disclaimer: Unless otherwise incorporated into or part of a supplemental manufacturer's warranty, Polyglass warrants its product(s) against manufacturing defects that result in the material not complying with product specifications for a period of 1 year.

All data furnished refers to standard production and is given in good faith within the applicable manufacturing and testing tolerances.

Polyglass U.S.A., Inc., reserves the right to improve and change its products at any time without prior notice. Polyglass U.S.A., Inc. cannot be held responsible for the use of its products under conditions beyond its own control. For most current product data and warranty information, visit www.polyglass.us



PRODUCT DATA

Materials

- Heavy Gauge Extruded Aluminum

Standard Sizes

- 1.5" x 5.5"
- 3" x 5.5"

APPLICABLE STANDARDS

- ANSI/SPRI/FM 4435/ES-1 Standard
- FM Approved



AVAILABLE COLORS

Choose from over 30 colors and finishes, see color chart for color options.