

# POLYFORZA DRIP EDGE

BUILT-UP OR MODIFIED VERSION

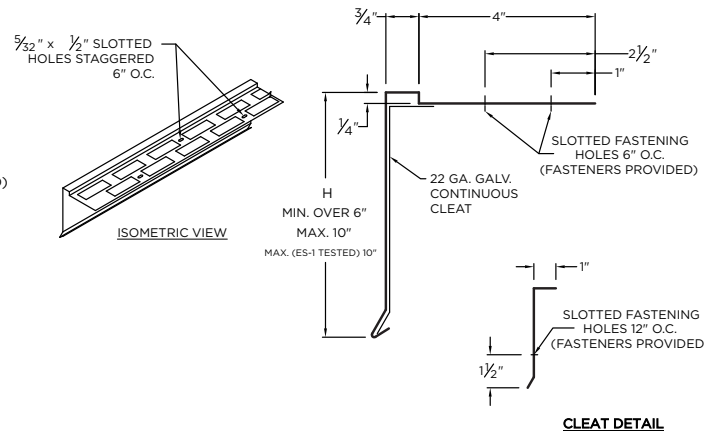
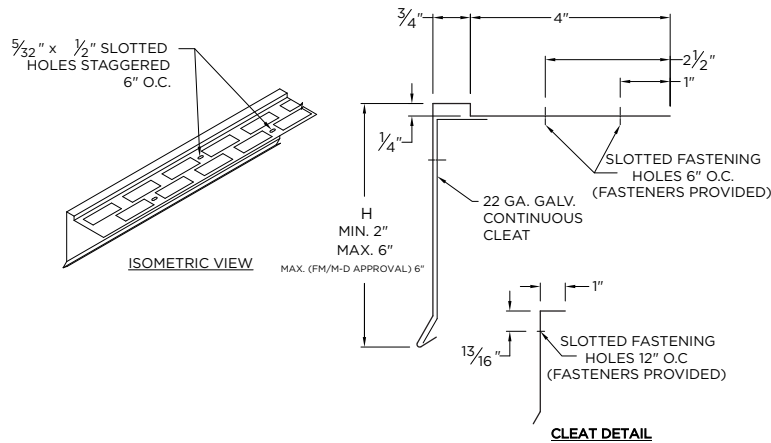
## NOTES

- Includes concealed splice plates that must be field caulked to prevent water entry
- Unless otherwise noted, fabrication of miters and accessories are provided with a non-penetrating quicklock joint, then factory sealed watertight
- Welded accessories require minimum material thickness of .050"
- For non-90 miters, see separate print approval
- Product should be installed per provided installation instructions
- ANSI/SPRI/FM 4435/ES-1 Test Pressure up to 276 psf
- FM and Miami-Dade Approval (Max 6" Face)

## FACE HEIGHT 6" OR LESS

## FACE HEIGHT OVER 6"

(NO FM or MIAMI-DADE APPROVAL)



## APPROVALS



ANSI/SPRI/FM 4435/ES-1  
 Test Pressures listed in notes

## DIMENSIONS

\_\_\_\_\_ (H) Face Height (inches-Max 10")

## MATERIAL

- 24 Ga. Galv. Steel
- 22 Ga. Galv. Steel
- .040" Aluminum
- .050" Aluminum
- .063" Aluminum
- OTHER: \_\_\_\_\_

Color: \_\_\_\_\_

Finish: \_\_\_\_\_

- Substrate:**  Wood  
 Masonry  
 Metal
- If substrate is not given, wood fasteners will be provided.

## QUANTITIES

\_\_\_\_\_ Lineal Feet (12'-0" Lengths)

\_\_\_\_\_ Outside Miter (90°)

\_\_\_\_\_ Inside Miter (90°)

Accessory Type:

- Quicklock (Default)
- Welded (Surcharge)

## PROJECT INFO

Project Name: \_\_\_\_\_

Architect: \_\_\_\_\_

Roofing Contractor: \_\_\_\_\_

### Project Type:

By selecting this box you have verified and confirmed that dimensions, sizes, and quantities are correct. All products will be installed in strict accordance with printed instructions.

Date: \_\_\_\_\_

**Polyglass USA, Inc.**

1111 W. Newport Center Dr.  
 Deerfield Beach, FL 33442  
 Customer Service: 800-222-9782  
 Technical Service: 866-794-9659

SHT# 1 of 1

DATE: 02/03/22

DRN BY: JJC

CKD BY: MM

DWG #: 45010-37595

REV: A