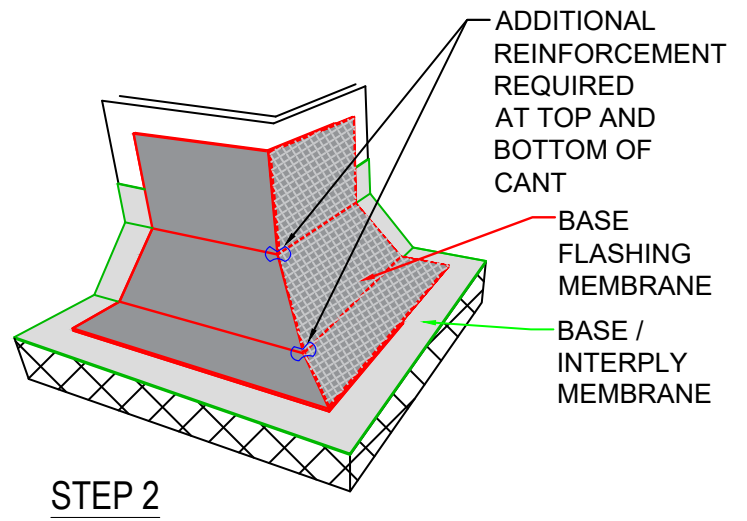
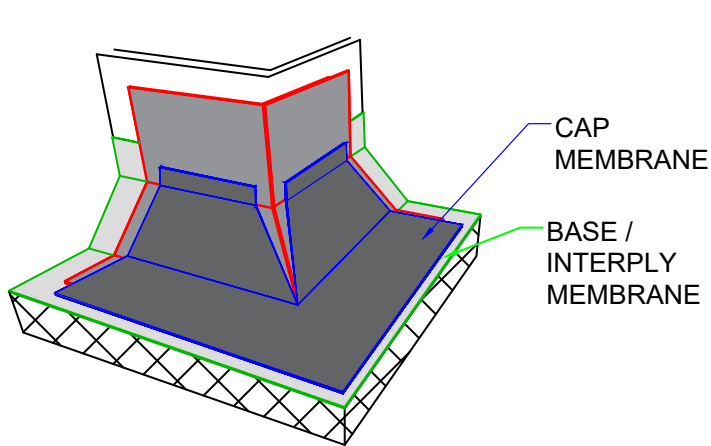


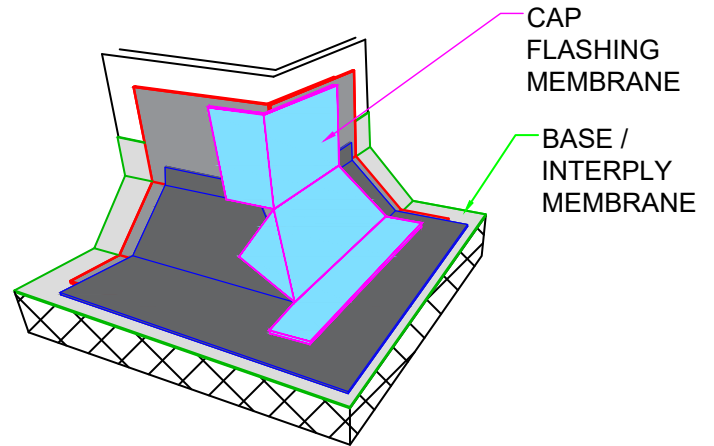
STEP 1



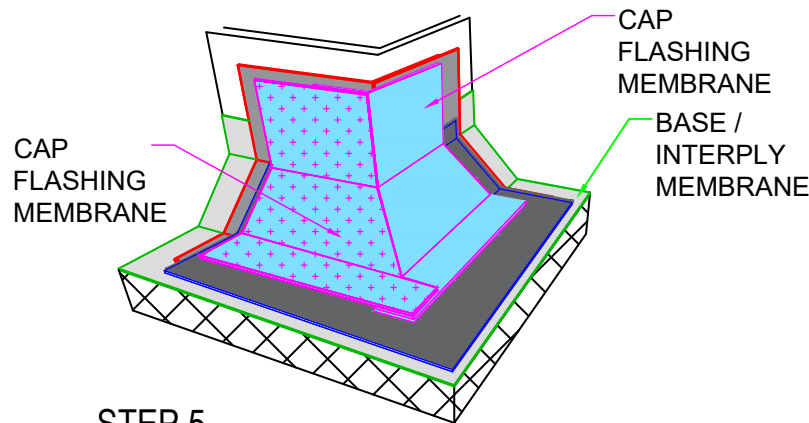
STEP 2



STEP 3



STEP 4



STEP 5

GENERAL NOTATIONS:

1. FOR USE IN CANANA ONLY
2. For heat fused membrane applications, set metal flashing onto heated softened membrane.
3. Extension of field base/plies 1" min above top of cant, required(not shown for clarity).
4. Membrane end laps to be a minimum 6" and fully adhered at all membrane to membrane seams.
5. Membrane laps at flanged metal to be 3" minimum and fully bonded to primed metal surface.

NOT TO SCALE



polyglass.us

1111 West Newport Center Drive
Deerfield Beach, FL 33442
Technical Service: (866) 794-9659
technical@polyglass.com

Description:

**OUTSIDE CORNER FLASHING
DETAIL (Typical)**

Number:

PG-LS-WALL-03C

Revision Date:

072022