

POLYGLASS®



ELASTOBASE™ SA

Elastobase SA membrane is a self-adhered, elastomeric base ply low-slope roofing product manufactured using patented ADESO® dual-compound self-adhered technology, whereby a “true” Styrene-Butadiene-Styrene (SBS) modified asphalt compound is applied on the top layer and an aggressive self-adhesive compound is applied on the bottom layer. Elastobase SA is designed to be used as a base sheet in “Stick 1-Torch 1” applications where the cap sheet is heat welded. Polyglass offers a variety of compatible APP and SBS torch cap sheets.

- ASTM D1970; ASTM D4601, Type II
- UL Classified
- 65 mils (1.65mm) thickness
- Self-Adhered, fiberglass reinforced SBS base sheet
- Top film, bottom split release film



Typical Applications

- Residential or commercial low-slope roofing
- Standard new construction and re-roofing applications
- Job sites where fast dry-in of project is important
- Base ply for 2-ply systems where cap sheet is torched

Features and Benefits

- Excellent adhesion and application to multiple substrates
- Quick dry-in of your building
- Split release film for quick installation

Installation

Elastobase SA is designed to be used as a base sheet in “Stick 1-Torch 1” applications where the cap sheet is heat welded. Polyglass offers a variety of compatible APP and SBS torch cap sheets.

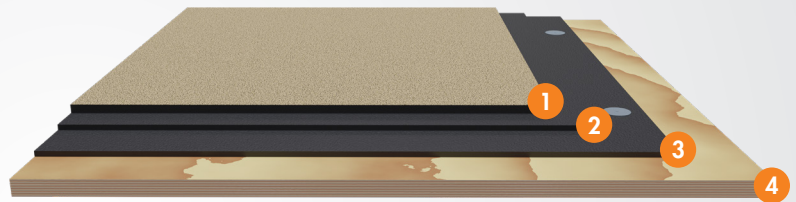
Enhanced Warranties with Elastobase SA

Warranty Length	Base Sheet	Interply Sheet	Cap Sheet
15 years	Elastobase SA	Optional	Any Polyglass Torch Cap Sheet

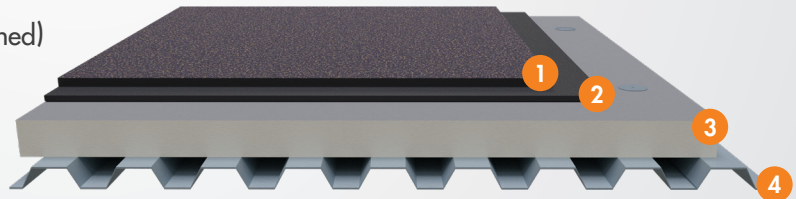
Note: All Systems require minimum ¼":12" Slope. Material and Material and Labor Warranties Only.

Typical Elastobase SA Assemblies

- 1 Cap Sheet: Polybond G (heat-welded)
- 2 Base Sheet: Elastobase SA (self-adhered)
- 3 Insulation: Elastobase (mechanically attached)
- 4 Roof Deck: Wood Deck



- 1 Cap Sheet: Polybond G (heat-welded)
- 2 Base Sheet: Elastobase SA (self-adhered)
- 3 Insulation: Polyglass Polytherm® ISO (mechanically attached)
- 4 Roof Deck: Steel Deck



- 1 Cap Sheet: Polybond G (heat-welded)
- 2 Base Sheet: Elastobase SA (self-adhered)
- 3 Roof Deck: Concrete (primed)

